

# MONTHLY MEMBERSHIP PROGRESS REPORT

LOCATION MISSOURI

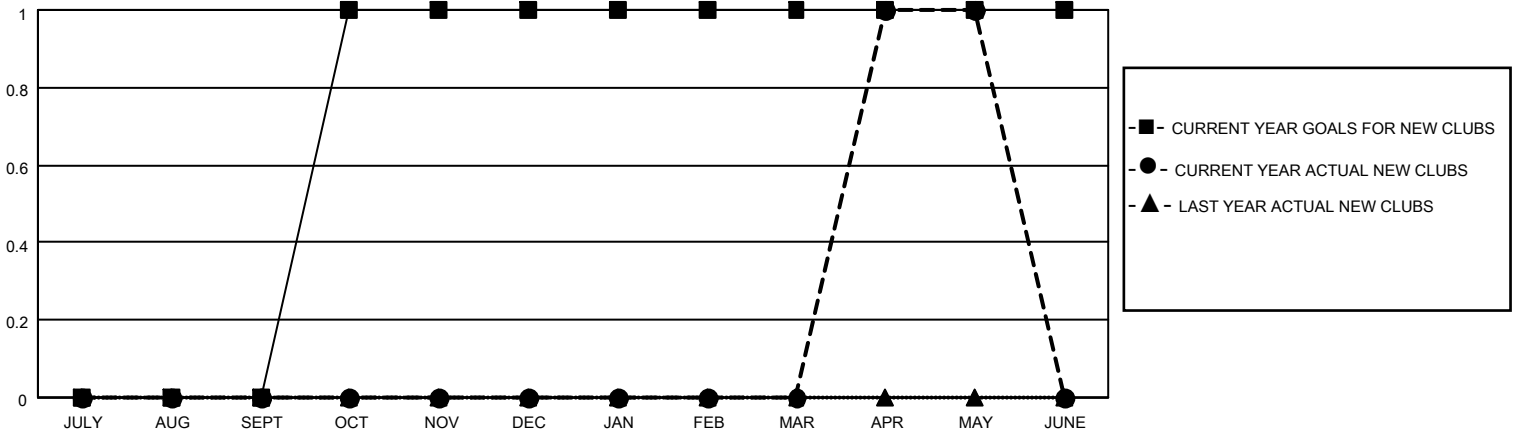
District 26 M1

Results as of: 5/31/2023

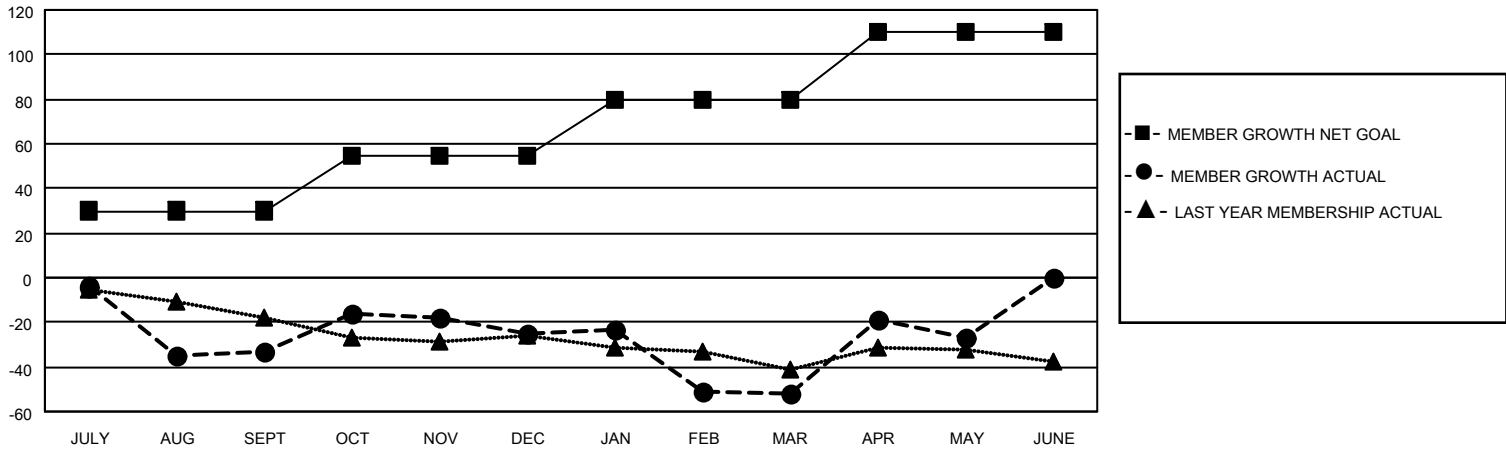
Clubs			
RESULTS FOR 2022-2023			
QUARTER	NEW CLUB GOAL	NEW CLUBS	DROPPED CLUBS
JULY/AUG/SEPT	0	0	0
OCT/NOV/DEC	1	0	2
JAN/FEB/MAR	0	0	0
APR/MAY/JUNE	0	1	0

Members			
RESULTS FOR 2022-2023			
QUARTER	MEMBER GROWTH NET GOAL	MEMBER GROWTH ACTUAL	DROPPED MEMBERS ACTUAL (including transfers)
JULY/AUG/SEPT	30	10	42
OCT/NOV/DEC	25	26	18
JAN/FEB/MAR	25	17	44
APR/MAY/JUNE	30	48	23

**GOALS AND ACTUAL NEW CLUBS CUMULATIVE**



**GOALS AND ACTUAL MEMBERS CUMULATIVE**



**DROPPED CLUBS: 2**

**15 CLUBS OF 37 ADDED 1 OR MORE NEW MEMBERS**

**GENDER DISTRIBUTION**

MALE	706 (71.39%)
FEMALE	283 (28.61%)
NON BINARY	0 (0.00%)
PREFER NOT TO ANSWER	0 (0.00%)

**DROPPED MEMBERS**

[CLICK HERE FOR CUMULATIVE MEMBERSHIP DATA](#)

DECEASED	18
CLUB CANCELLED	4
OTHER	105
<b>TOTAL</b>	<b>127</b>

TOTAL FAMILY UNIT MEMBERS	129
FAMILY MEMBERS PAYING HALF DUES	65